

Gravimetric Certificate

Dr. Ehrenstorfer



Product Identification

16655100 E-Pyriphenox
Formula C₁₄H₁₂Cl₂N₂O
Mol.Weight 295.2
CAS No. 83227-22-9

Reference Materials for Residue Analysis

Expiry Date 13.11.2019
Lot Number 157474IO
Store at 20°C in the dark

Please note: The expiry date is valid under recommended storage conditions only.

Gravimetric Data		Conc. (mg/l)	Purity %	Weight (mg)
Product Name		10.000	95.8	1.048
E-Pyriphenox				
Solvent Information				
Solvent	Lot No.	Exact Quantity (ml)		
Iso-Octane	H20705	100.00		
Traceability Data				
16655100 157463	neat product			
16655100 157474IO	10.000 mg/l			
Analytical Data				
Detection: GC/ECD	Method Details:			
Column: DB-5, 30 m, ID 0.25 mm	Injector: 280° C			
Inj.-Vol.: 1.00 µl	Start Temperature: 60° C for 5 min			
Flow: 1.0 ml/min	End Temperature: 280° C for 1 min			
Ret.-Time: 18.52 min.	Gradient: 15° C/min			
Identity check RT				
Comment				
The uncertainty/tolerance of this standard is +/- 2.0 %, calculated in accordance with the EURACHEM/CITAC Guide - Quantifying Uncertainty in Analytical Measurement - Second Edition. The uncertainty given is the expanded combined uncertainty and represents an estimated standard deviation equal to the positive square root of the total variance of the uncertainty of components. The expanded uncertainty is U which is U _c (y)*K, where K is the coverage factor at the 95% confidence level (K=2). The expanded uncertainty is based on the combination of uncertainties associated with each individual operation involved in the preparation of this product.				

Certified on 13.11.2017

by D. Schmid

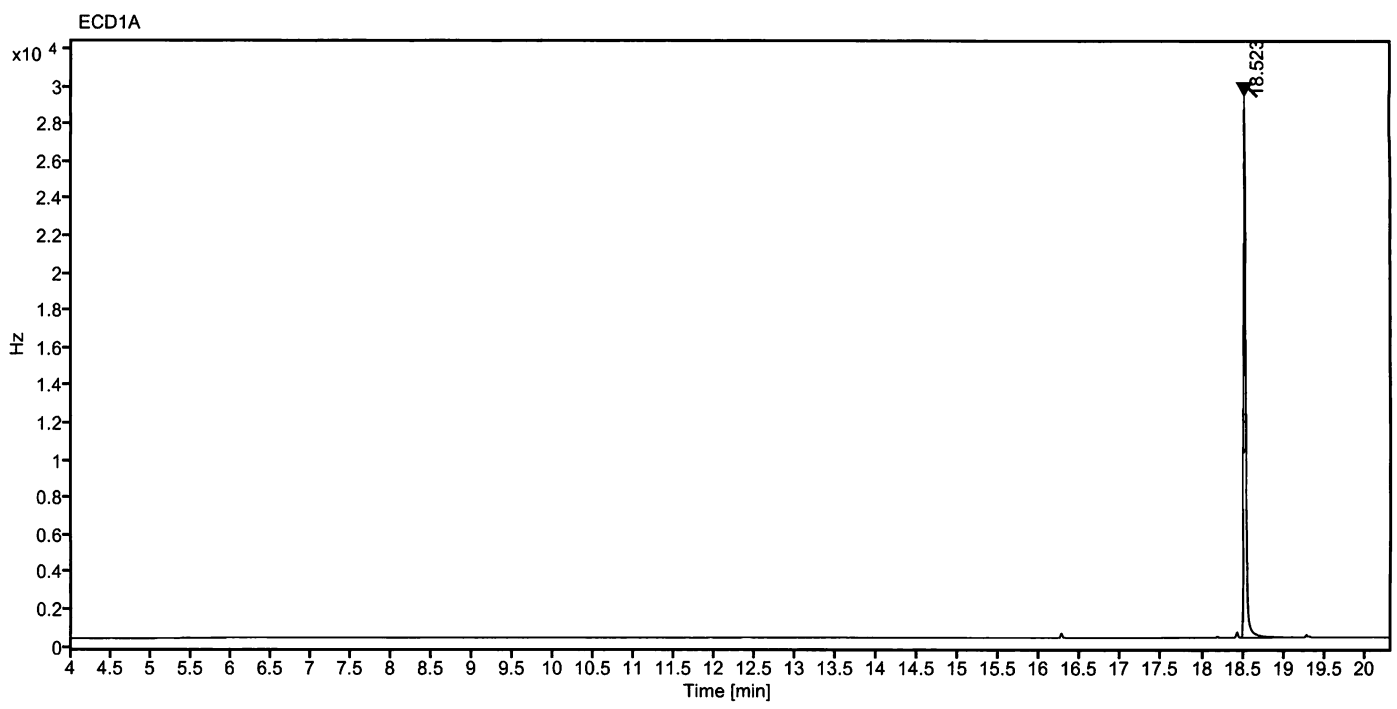
Schmid D.

The Laboratory LGC Labor GmbH is accredited by DAkkS as indicated by the Accreditation Number D-RM-19883-01 & D-PL-19883-01 has shown competence based on ISO Guide 34:2009 with relevant parts of DIN EN ISO/IEC 17025:2005 for production of certified reference materials in form of organic pure substances and in form of single and multi-component solutions organic pure substances.

LGC Labor GmbH · Bgm.-Schlosser-Str. 6 A · 86199 Augsburg · Germany
Phone +49 821 906080 · Fax +49 821 9060888 · augsburg.inquiry@lgcgroup.com
The warranty for this product is limited to the purchasing price of this product.

13.11.2017 CM

Data file: 16655100-02-r001.dx **Instrument:** ECD
Sample name: 157474IO **Sequence Name:** 2017KW45-5a
Inj. volume [µl]: 1.0 **Injection date:** 11/10/2017 2:49:52 PM
Acq. method: pesk.amx **Location:** 11
Sample Description E-Pyriphenox



Signal: ECD1A

Nr.	RT [min]	Area [Hz*s]	Height [Hz]	Area%	Width [min]
1	18.523	52404.04475	28995.01	100.00	0.028
	Sum	52404.04			

Schmid D.