

Certificate of Analysis

Dr. Ehrenstorfer



Product Identification

10648000 Bis-(4-aminophenyl)methane
CA Benzenamine, 4,4'-methylenebis-
IUPAC 4,4'-Methylenedianiline
Formula C₁₃H₁₄N₂
Mol.Weight 198.26
CAS No. 101-77-9

Reference Materials for Residue Analysis

Expiry Date 01.10.2019
Lot Number 30327
Store at 20 °C ±4 °C

Please note: The expiry date is valid under recommended storage conditions only.

Toxicological Data



R Code 39-43-48/49-51-68

S Code 23-36-42-53-61

LD50 (Rats female/male in mg/kg) 517

Physical Data

Phase crystalline solid Vapour pressure 1 hPa at 197 °C
Color yellowish Solubility in water N/A g/l at °C
Melt.Range Boiling Range (lit.)

Analytical Data

Detection: GC/FID
Column: DB-5, 30 m, ID 0.25 mm
Inj.-Vol.: 1.00 µl
Flow: 1.0 ml/min
Ret.-Time: 27.72 min.

Method Details:
Injector: 320° C
Start Temperature: 110° C for 5 min
End Temperature: 320° C for 8 min
Gradient: 5° C/min

Identity: RT

Comment Purity was determined by external standard method.

Water Content Determined by Karl-Fischer Titration

Det. Purity 99.0 % Tolerance/Uncertainty +/- 0.5 %

The uncertainty/tolerance of this standard is calculated in accordance with the EURACHEM/CITAC Guide - Quantifying Uncertainty in Analytical Measurement - Second Edition. The uncertainty given is the expanded combined uncertainty and represents an estimated standard deviation equal to the positive square root of the total variance of the uncertainty of components. The expanded uncertainty is U which is $U_c(y) \cdot K$, where K is the coverage factor at the 95% confidence level ($K=2$). The expanded uncertainty is based on the combination of uncertainties associated with each individual operation involved in the preparation of this product.

Certified on 01.10.2015

by M. Beck

The Laboratory LGC Labor GmbH is accredited by DAkkS as indicated by the Accreditation Number D-RM-19883-01 & D-PL-19883-01 has shown competence based on ISO Guide 34:2009 with relevant parts of DIN EN ISO/IEC 17025:2005 for production of certified reference materials in form of organic pure substances and in form of single and multi-component solutions organic pure substances.

LGC Labor GmbH · Bgm.-Schlosser-Str. 6 A · 86199 Augsburg · Germany
Phone +49 821 906080 · Fax +49 821 9060888 · augsburg.inquiry@lgcgroup.com
The warranty for this product is limited to the purchasing price of this product.

Sample Name: 50909ME 30327

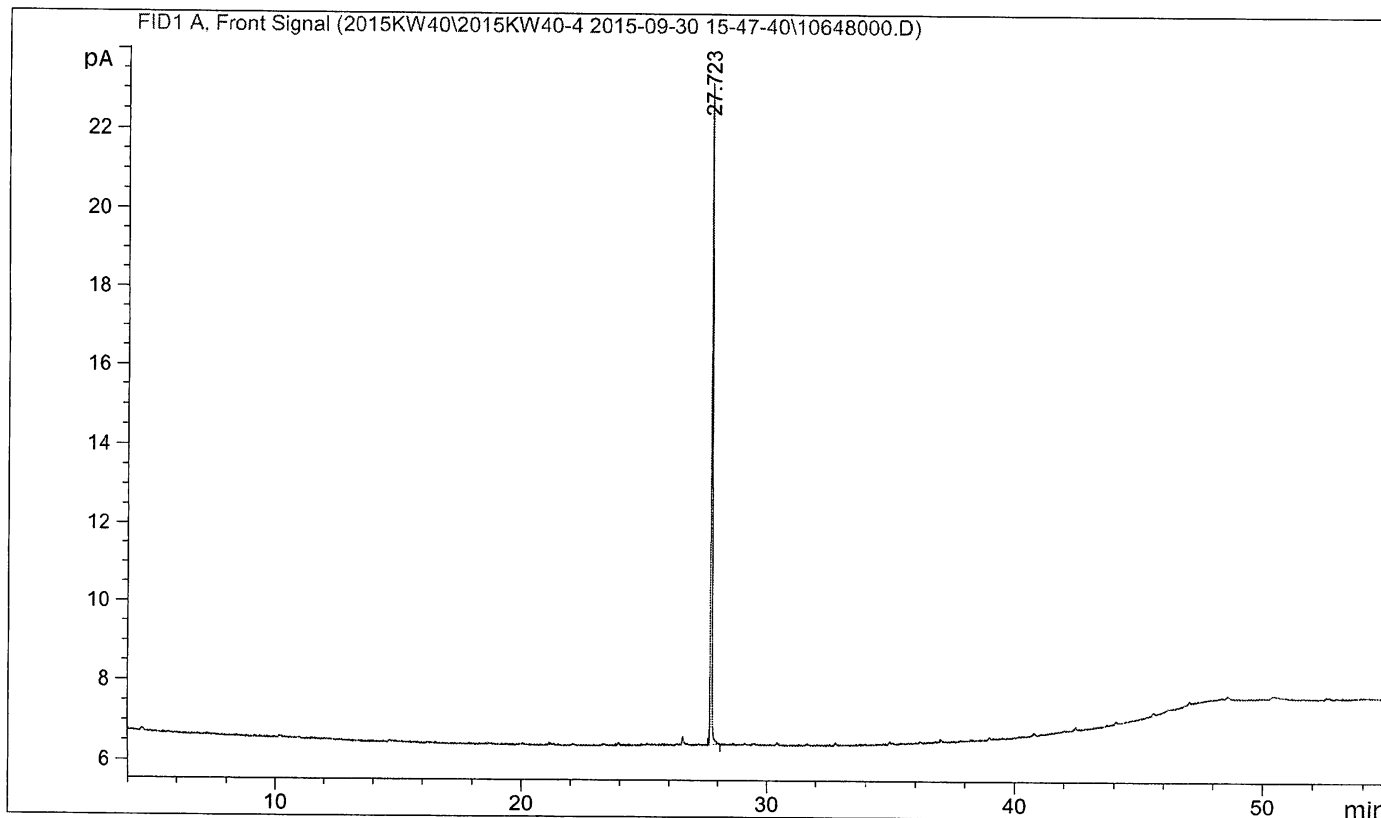
01.10.15W

```

=====
Acq. Operator   : Dr. Heidrich                      Seq. Line :   16
Acq. Instrument : GCFID2                          Location  : Vial 102
Injection Date  : 01.10.2015 00:21:11             Inj       :    1
                                                    Inj Volume: 4 µl

Acq. Method     : C:\CHEM32\1\DATA\2015KW40\2015KW40-4 2015-09-30 15-47-40\PAH4.M
Last changed    : 26.11.2012 08:35:06
Analysis Method : C:\CHEM32\1\METHODS\PAH4.M
Last changed    : 26.11.2012 08:35:06
Method Info     : pah4

Sample Info     : Bis-(4-aminophenyl)methane
    
```



=====
 Area Percent Report
 =====

Sorted By : Signal
 Multiplier: : 1.0000
 Dilution: : 1.0000
 Do not use Multiplier & Dilution Factor with ISTDs

G. Bank

Signal 1: FID1 A, Front Signal

Peak #	RetTime [min]	Type	Width [min]	Area [pA*s]	Height [pA]	Area %
1	27.723	BB	0.0547	58.45416	16.74755	1.000e2

Totals : 58.45416 16.74755

=====
 *** End of Report ***