

Certificate of Analysis



Product Identification

11042000 (1S,6R)-3-Carene

CA Bicyclo[4.1.0]hept-3-ene, 3,7,7-trimethyl-, (1S,6R)-

IUPAC (1S)-3,7,7-Trimethylbicyclo[4.1.0]hept-3-ene

Formula C₁₀H₁₆

Mol.Weight 136.23




CAS No. 498-15-7

Expiry Date 17.09.2022

Lot Number 982806

Store at 4 °C ±4 °C

Please note: The expiry date is valid under recommended storage conditions only.

Toxicological Data    R Code S Code LD50 (Rats female/male in mg/kg) N/A	Physical Data Phase liquid Color colourless Melt.Range Vapour pressure N/A at °C Solubility in water N/A g/l at °C Boiling Range (lit.)
Analytical Data Detection: GC/FID Column: DB-5, 30 m, ID 0.25 mm Inj.-Vol.: 1.00 µl Flow: 1.0 ml/min Ret.-Time: 10.61 min.	Method Details: Injector: 200° C Start Temperature: 40° C for 5 min End Temperature: 200° C for 16 min Gradient: 15° C/min
Identity: RT, MS Comment Purity was determined by chromatographic assay corrected by water.	
Water Content 0.0 % Determined by Karl-Fischer Titration Det. Purity 98.1 % Tolerance/Uncertainty +/- 2.0 % <p>The uncertainty/tolerance of this standard is calculated in accordance with the EURACHEM/CITAC Guide - Quantifying Uncertainty in Analytical Measurement - Second Edition. The uncertainty given is the expanded combined uncertainty and represents an estimated standard deviation equal to the positive square root of the total variance of the uncertainty of components. The expanded uncertainty is U which is $Uc(y) \cdot K$, where K is the coverage factor at the 95% confidence level (K=2). The expanded uncertainty is based on the combination of uncertainties associated with each individual operation involved in the preparation of this product.</p>	

Certified on 17.09.2018

by M. Beck

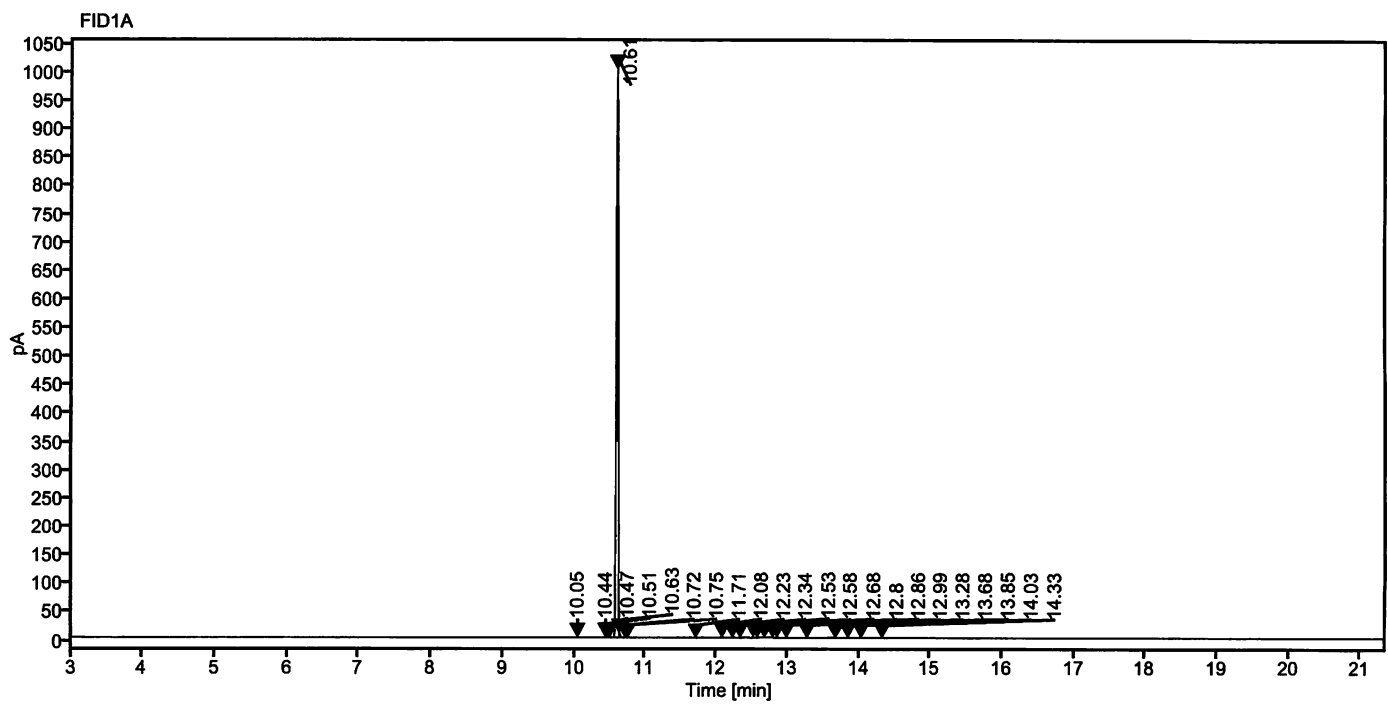
The Laboratory LGC Labor GmbH is accredited by DAkkS as indicated by the Accreditation Number D-RM-19883-01 & D-PL-19883-01 has shown competence based on ISO Guide 34:2009 with relevant parts of DIN EN ISO/IEC 17025:2005 for production of certified reference materials in form of organic pure substances and in form of single and multi-component solutions organic pure substances.

LGC Labor GmbH · Bgm.-Schlosser-Str. 6 A · 86199 Augsburg · Germany
Phone +49 821 906080 · Fax +49 821 9060888 · augsburg.inquiry@lgcgroup.com
The warranty for this product is limited to the purchasing price of this product.

130915

Data file: 11042000-02-r001.dx Instrument: FID 3
Sample name: 80912ME 982806 Sequence Name: 2018KW37-0912a
Inj. volume [µl]: 1.0 Injection date: 9/12/2018 3:06:13 PM
Acq. method: 200.amx Location: 83

Sample Description (1S,6R)-3-Carene



Signal: FID1A

Nr.	RT [min]	Area [pA*s]	Height [pA]	Area%	Width [min]
1	10.05	1.87570	1.12	0.12	0.100
2	10.44	1.53898	1.03	0.09	0.051
3	10.47	2.90969	1.81	0.18	0.036
4	10.51	3.58647	2.21	0.22	0.060
5	10.61	1591.86336	1001.25	98.12	0.024
6	10.63	7.42805	8.64	0.46	0.014
7	10.72	0.63479	0.42	0.04	0.049
8	10.75	0.72164	0.48	0.04	0.066
9	11.71	0.38022	0.24	0.02	0.060
10	12.08	1.28165	0.87	0.08	0.109
11	12.23	0.42400	0.27	0.03	0.068
12	12.34	0.48589	0.29	0.03	0.073
13	12.53	1.97186	1.28	0.12	0.070
14	12.58	0.37153	0.21	0.02	0.066

Handwritten signature