

# Certificate of Analysis

Dr. Ehrenstorfer

## Reference Materials for Residue Analysis

### Product Identification

10572000 2-Benzyl-4-chlorophenol  
CA Phenol, 4-chloro-2-(phenylmethyl)-  
IUPAC 4-chloro-2-(phenylmethyl)-phenol  
Formula C<sub>13</sub>H<sub>11</sub>ClO  
Mol.Weight 218.69  
CAS No. 120-32-1

Expiry Date 02.06.2018  
Lot Number 00121  
Store at 20 °C ±4 °C

Please note: The expiry date is valid under recommended storage conditions only.

### Toxicological Data



R Code 22-35/37/38-53

S Code 22-25-36-60/61

LD50 (Rats female/male in mg/kg) 1700

### Physical Data

Phase crystalline solid Vapour pressure N/A at °C  
Color grey-yellow to brown Solubility in water <1g g/l at 16 °C  
Melt.Range Boiling Range (lit.)

### Analytical Data

Detection: GC/FID  
Column: DB-5, 30 m, ID 0.25 mm  
Inj.-Vol.: 1.00 µl  
Flow: 1.0 ml/min  
Ret.-Time: 18.10 min.

Method Details:  
Injector: 280° C  
Start Temperature: 60° C for 5 min  
End Temperature: 280° C for 1 min  
Gradient: 15° C/min

Identity: RT

Comment Purity was confirmed by external standard method

Water Content 0.0 % Determined by Karl-Fischer Titration

Det. Purity 98.0 % Tolerance/Uncertainty +/- 1.0 %

The uncertainty/tolerance of this standard is calculated in accordance with the EURACHEM/CITAC Guide - Quantifying Uncertainty in Analytical Measurement - Second Edition. The uncertainty given is the expanded combined uncertainty and represents an estimated standard deviation equal to the positive square root of the total variance of the uncertainty of components. The expanded uncertainty is U which is  $U_c(y) \cdot K$ , where K is the coverage factor at the 95% confidence level (K=2). The expanded uncertainty is based on the combination of uncertainties associated with each individual operation involved in the preparation of this product.

Certified on 02.06.2014

by P. Feuermiegel : V. M. Behr

The Laboratory LGC Labor GmbH is accredited by DAkkS as indicated by the Accreditation Number D-RM-14174-01 has shown competence based on ISO Guide 34:2009 with relevant parts of DIN EN ISO/IEC 17025:2005 for production of certified reference materials in form of organic pure substances and in form of single and multi-component solutions organic pure substances.

LGC Labor GmbH · Bgm.-Schlosser-Str. 6 A · 86199 Augsburg · Germany  
Phone +49 821 906080 · Fax +49 821 9060888 · info@analytical-standards.com  
The warranty for this product is limited to the purchasing price of this product.

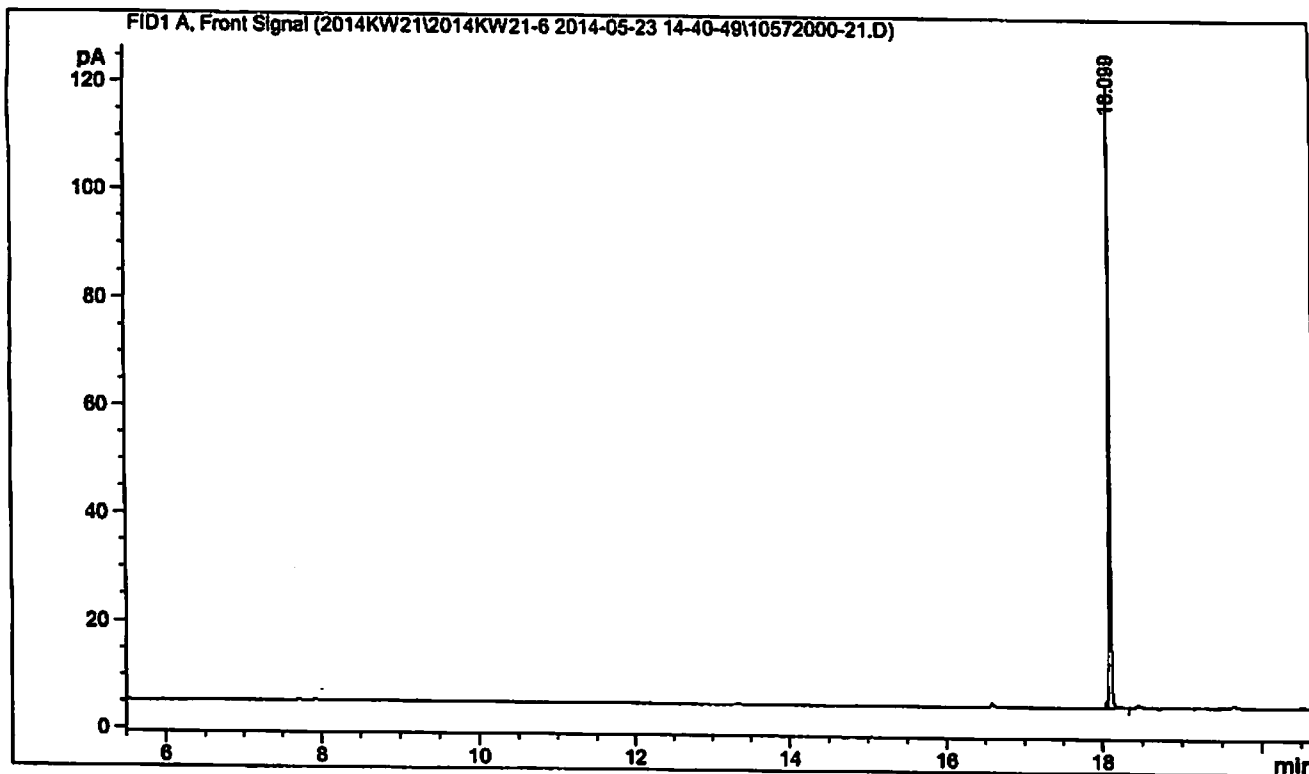
=====

Acq. Operator	: Dr. Heidrich	Seq. Line	: 4
Acq. Instrument	: GCFID2	Location	: Vial 124
Injection Date	: 23.05.2014 17:25:08	Inj	: 1
		Inj Volume	: 1 µl

Acq. Method : C:\CHEM32\1\DATA\2014KW21\2014KW21-6 2014-05-23 14-40-49\PESK.M  
Last changed : 28.11.2012 09:59:49 by Dr. Heidrich  
Analysis Method : C:\CHEM32\1\METHODS\PESK.M  
Last changed : 28.11.2012 09:59:49 by Dr. Heidrich  
Method Info : pesk

Sample Info : 2-Benzyl-4-chlorophenol

*Heidrich*  
*26.05.14*



=====  
Area Percent Report  
=====

Sorted By : Signal  
Multiplier: : 1.0000  
Dilution: : 1.0000  
Do not use Multiplier & Dilution Factor with ISTDs

*i. V. P. Beck*

Signal 1: FID1 A, Front Signal

Peak #	RetTime [min]	Type	Width [min]	Area [pA*s]	Height [pA]	Area %
1	18.099	BB	0.0215	162.54277	115.20780	1.000e2

Totals : 162.54277 115.20780

=====  
\*\*\* End of Report \*\*\*