

# Certificate of Analysis

Dr. Ehrenstorfer



## Product Identification

10028400 Acid Green 16

CA Ethanaminium, N-[4-[[4-(diethylamino)phenyl][3,6-(disulfo-1-naphthalenyl)methylene]-2,5-

IUPAC Sodium N-[4-[[4-(diethylamino)phenyl][3,6-(disulfo-1-naphthalenyl)methylene]-2,5-

Formula C<sub>31</sub>H<sub>33</sub>N<sub>2</sub>NaO<sub>6</sub>S<sub>2</sub>

Mol.Weight 616.72

CAS No. 12768-78-4

## Reference Materials for Residue Analysis

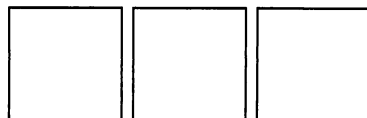
Expiry Date 23.01.2021

Lot Number 125408

Store at 20 °C ±4 °C

Please note: The expiry date is valid under recommended storage conditions only.

## Toxicological Data



R Code

S Code

LD50 (Rats female/male in mg/kg) N/A

## Physical Data

Phase crystalline solid

Color \*NEU\*

Melt.Range dec °C

Vapour pressure N/A at °C

Solubility in water N/A g/l at °C

Boiling Range (lit.)

## Analytical Data

Detection: LC/MSD

Column: ReproSil 100 C18 5µ 250x3

Flow: 0.5 ml/min

Ret.-Time: 1.39 min.

Method Details:

Acetonitrile:H<sub>2</sub>O 9:1

Identity: UV, RT, MS, IR

Comment Purity was confirmed by external standard method.

Inj. Vol.: 5 µL.

Water Content 8.2 % Determined by Karl-Fischer Titration

Det. Purity 69.0 % Tolerance/Uncertainty +/- 2.0 %

The uncertainty/tolerance of this standard is calculated in accordance with the EURACHEM/CITAC Guide - Quantifying Uncertainty in Analytical Measurement - Second Edition. The uncertainty given is the expanded combined uncertainty and represents an estimated standard deviation equal to the positive square root of the total variance of the uncertainty of components. The expanded uncertainty is U which is  $U_c(y) \cdot K$ , where K is the coverage factor at the 95% confidence level (K=2). The expanded uncertainty is based on the combination of uncertainties associated with each individual operation involved in the preparation of this product.

Certified on 23.01.2017

by Dr. K. Wörmann

The Laboratory LGC Labor GmbH is accredited by DAkkS as indicated by the Accreditation Number D-RM-19883-01 & D-PL-19883-01 has shown competence based on ISO Guide 34:2009 with relevant parts of DIN EN ISO/IEC 17025:2005 for production of certified reference materials in form of organic pure substances and in form of single and multi-component solutions organic pure substances.

LGC Labor GmbH · Bgm.-Schlosser-Str. 6 A · 86199 Augsburg · Germany  
Phone +49 821 906080 · Fax +49 821 9060888 · augsburg.inquiry@lgcgroup.com  
The warranty for this product is limited to the purchasing price of this product.

Sample Name: 70119AL 125408

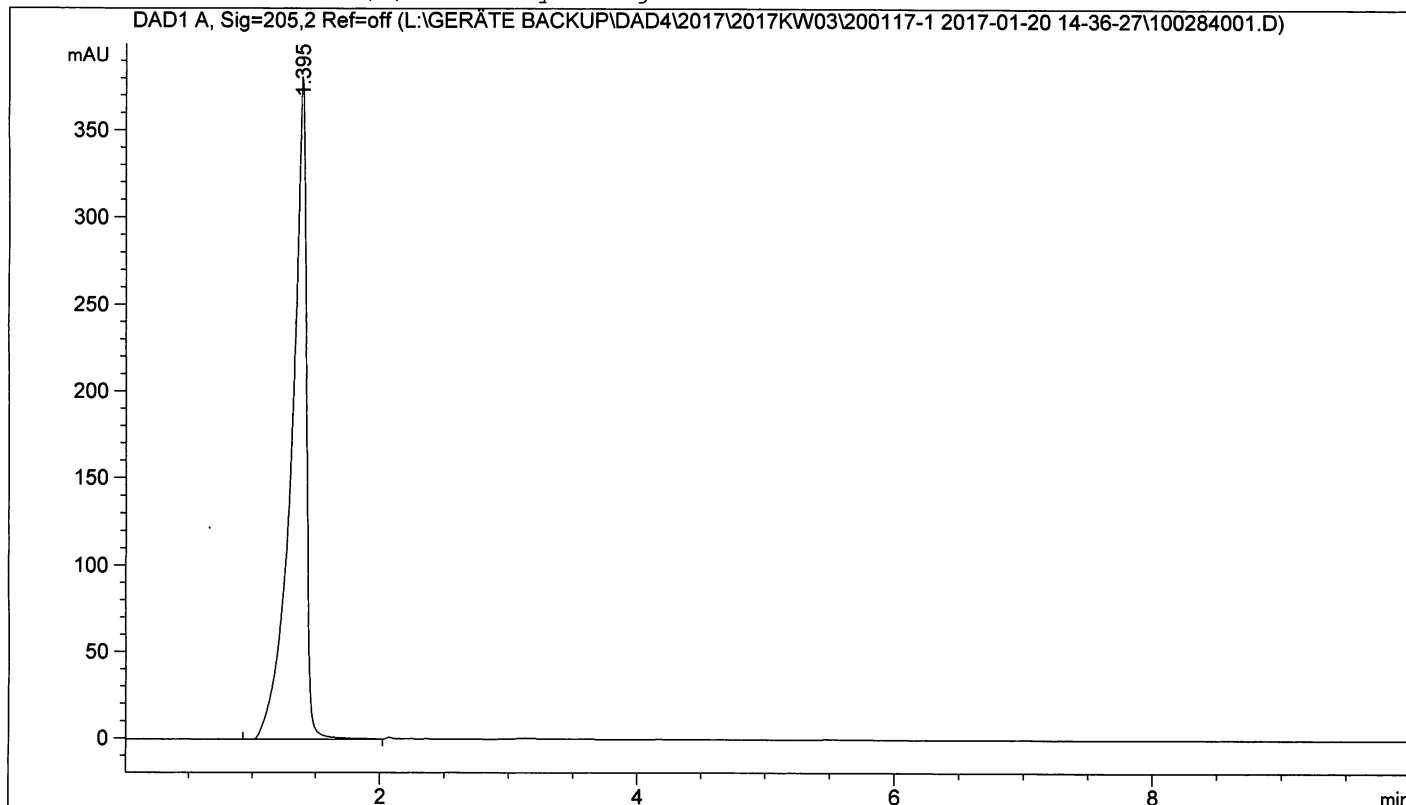
16

```

=====
Acq. Operator   : SYSTEM                      Seq. Line :   15
Acq. Instrument : LCMS                      Location  :    71
Injection Date  : 20.01.2017 17:12:37      Inj       :    1
                                           Inj Volume: 10.000 µl
Different Inj Volume from Sample Entry! Actual Inj Volume : 5.000 µl
Acq. Method     : C:\Chem32\1\Data\2017KW03\200117-1 2017-01-20 14-36-27\91MSNEG.M
Last changed    : 20.01.2017 14:58:47 by SYSTEM
Analysis Method : L:\GERÄTE BACKUP\DAD4\METHODS\91MSNEG.M
Last changed    : 30.07.2012 11:51:42 by DAD3
Method Info     : Acetonitrile : Water 9:1
  
```

Sample Info : Acid Green 16

Additional Info : Peak(s) manually integrated



```

=====
                          Area Percent Report
=====
  
```

```

Sorted By           :      Retention Time
Multiplier          :      1.0000
Dilution            :      1.0000
Use Multiplier & Dilution Factor with ISTDs
  
```

Signal 1: DAD1 A, Sig=205,2 Ref=off

Peak #	RetTime [min]	Sig	Type	Area [mAU*s]	Height [mAU]	Area %
1	1.395	1	BB	3078.93726	381.71008	100.0000

```
Totals :                3078.93726  381.71008
```

```

=====
*** End of Report ***
  
```