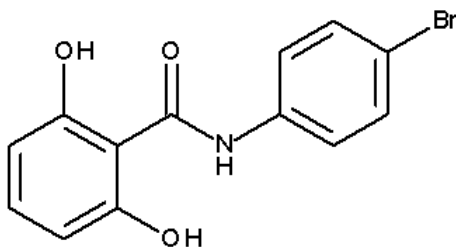




# Certificate of Analysis

## Reference Standard

Resorantel



Molecular Formula:  $C_{13}H_{10}BrNO_3$   
Molecular Weight: 308.13  
CAS Number: 20788-07-2

Catalogue Number: MM3223.00  
Lot Number: 65707  
Long-term Storage: 2 to 8 °C, dark  
Appearance: white solid  
Melting Point (DSC): 234 °C  
Assay 'as is': 99.6 %

Date of shipment: **2018-July-02**

This certificate is valid two years from the date of shipment provided the substance is stored under the recommended conditions unopened in the original container.

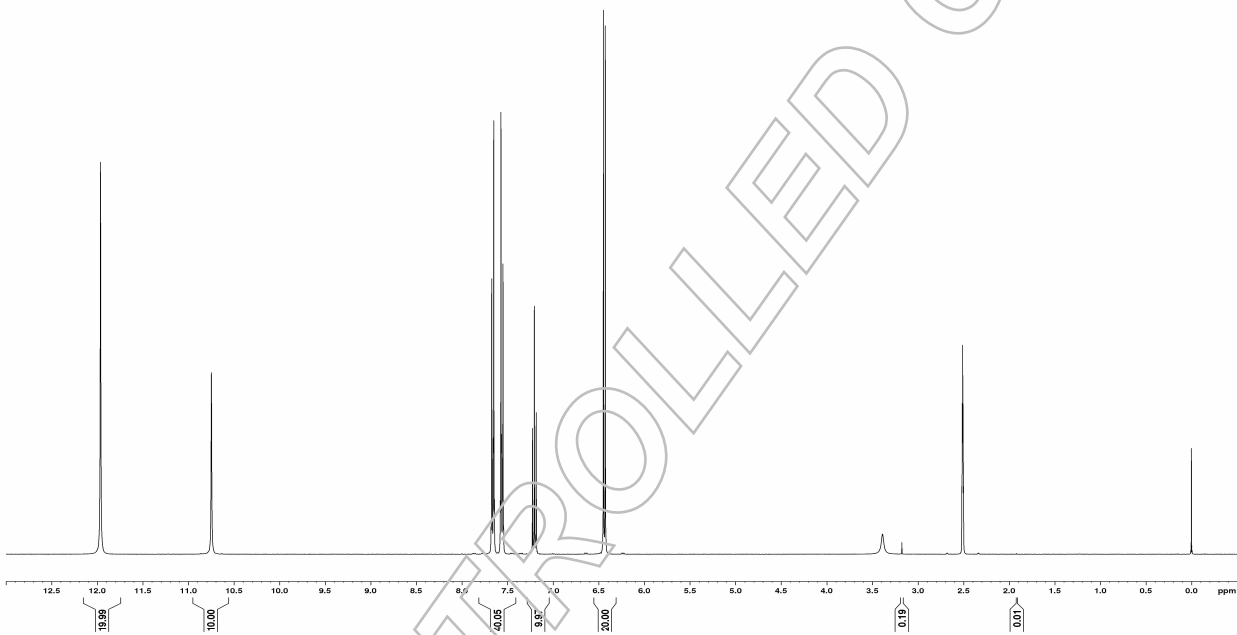


## I. Identity

The identity of the reference substance was established by following analyses.

### 1a. <sup>1</sup>H-NMR Spectrum

Conditions: 400 MHz, DMSO-d<sub>6</sub>

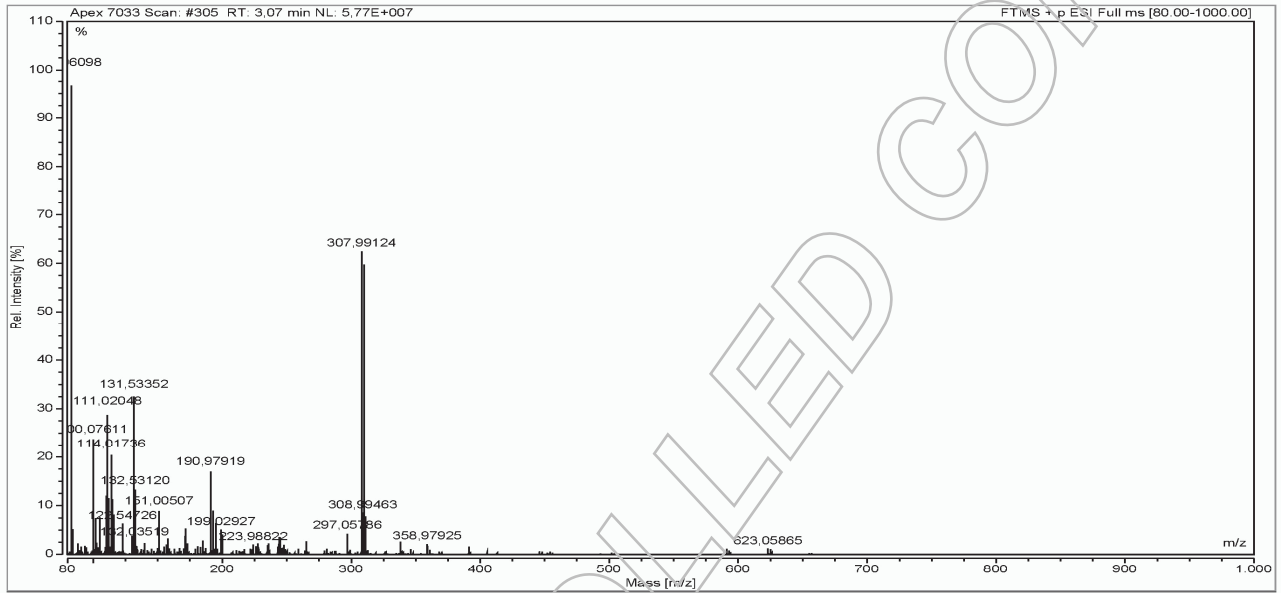


The structure is confirmed by the signals of the spectrum and their interpretation.



## Ib. Mass Spectrum

Method: HRMS; 3.5 kV ESI+; capillary temperature: 269 °C



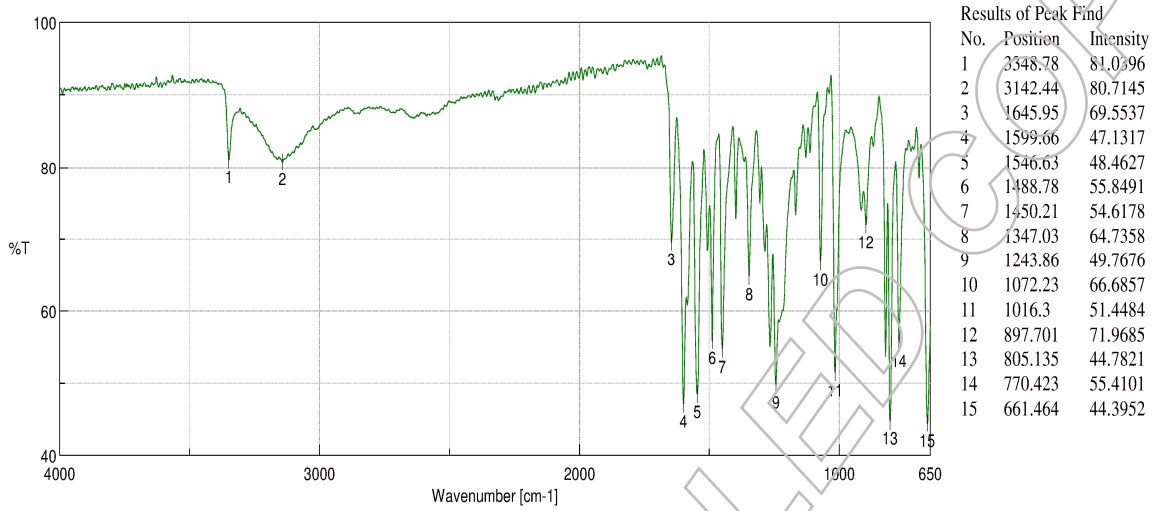
Theoretical value: 307.99168

The signal of the MS spectrum is consistent with the theoretical value and its interpretation is consistent with the structural formula.



## Ic. IR Spectrum

Method: Attenuated Total Reflection Fourier Transform Infrared (ATR-FTIR) Spectroscopy



The signals of the IR spectrum and their interpretation are consistent with structural formula.



## II. Purity

### Ila. High Performance Liquid Chromatography (HPLC)

The purity of the reference substance was analysed by high performance liquid chromatography (HPLC).

#### HPLC Conditions:

##### Column:

Cortecs UPLC C18 +  
1.6 µm, 75 x 2.1 mm

##### Conditions:

0.50 ml/min, 40 °C

mob. Phase A: Water, 0.1 % HCOOH

mob. Phase B: Acetonitrile, 0.1 % HCOOH

0-1 min A/B 98/2

1-4 min A/B to 2/98

4-5 min A/B to 98/2

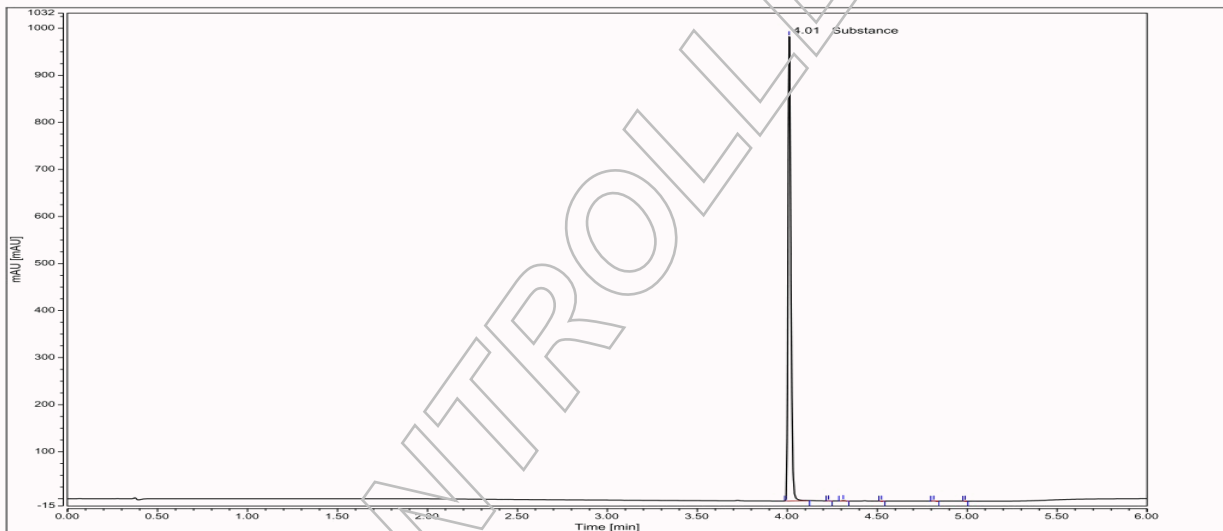
5-6 min A/B 98/2

##### Detector:

DAD  
283 nm

##### Injector:

Auto  
2 µl; 0.046 mg/ml in  
Acetonitrile





### Area Percent Report - Sorted by Signal

| Pk#    | Retention Time | Area           | Area %        |
|--------|----------------|----------------|---------------|
| 1      | 4.011          | 18.2703        | 99.83         |
| 2      | 4.229          | 0.0032         | 0.02          |
| 3      | 4.312          | 0.0191         | 0.10          |
| 4      | 4.523          | 0.0020         | 0.01          |
| 5      | 4.814          | 0.0062         | 0.03          |
| 6      | 4.989          | 0.0011         | 0.01          |
| Totals |                | <b>18.3019</b> | <b>100.00</b> |

For the calculation the system peaks were ignored. The content of the analyte was determined as the ratio of the peak area of the analyte and the cumulative areas of the purities, added up to 100 %.

#### Results:

**Average** 99.82 %  
**Number of results** n=3  
**Standard deviation** 0.01 %

### IIb. Water Content

Method: Karl Fischer titration

#### Results:

**Average** 0.12 %  
**Number of results** n=3  
**Standard deviation** < 0.01 %

### IIc. Residual Solvents

| Residual Solvent | Average | Method             |
|------------------|---------|--------------------|
| Methanol         | 0.06 %  | <sup>1</sup> H-NMR |

### III. Assay by Elementary Analysis (Carbon Titration)

Method: percentage carbon found in relation to percentage carbon as calculated for molecular formula

#### Results:

**Arithmetic mean (n=3)** 99.81 % (mass fraction)



#### IV. Final Result

|   |         |
|---|---------|
| <b>Chromatographic purity (HPLC)</b>    | 99.82 % |
| <b>Water content</b>                    | 0.12 %  |
| <b>Residual solvents</b>                | 0.07 %  |
| <b>Assay (100 % method)<sup>1</sup></b> | 99.63 % |

The assay is assessed to be 99.6 % 'as is'

The assay 'as is' is equivalent to the assay based on the not anhydrous and not dried substance respectively.

Release Date:

Luckenwalde, 2015-February-09

Signed:

---

Dr. Sabine Schröder  
Product Release

<sup>1</sup> The calculation of the 100 % method follows the formula:

$$\text{Assay (\%)} = (100 \% - \text{volatile contents}) * \frac{\text{Purity (\%)}}{100\%}$$

Volatile contents are considered as absolute contributions, purity is considered as relative contribution