

Certificate of Analysis



EHRENSTORFER™

Product Identification

13342300 2-Ethylhexyl diphenyl phosphate (technical)

CA Phosphoric acid,2-ethylhexyl diphenyl ester

IUPAC 2-Ethylhexyl diphenyl phosphate

Formula C₂₀H₂₇O₄P

Mol.Weight 362.4

CAS No. 1241-94-7

Expiry Date 17.12.2022

Lot Number 982098

Store at 20 °C ±4 °C

Please note: The expiry date is valid under recommended storage conditions only.

Toxicological Data



R Code 50

S Code 61

LD50 (Rats female/male in mg/kg) N/A

Physical Data

Phase liquid

Color colourless

Melt.Range

Vapour pressure N/A at °C

Solubility in water N/A g/l at °C

Boiling Range (lit.)

Analytical Data

Detection: GC/FID

Column: DB-5, 30 m, ID 0.25 mm

Inj.-Vol.: 1.00 µl

Flow: 1.0 ml/min

Ret.-Time: 15.42 min.

Method Details:

Injector: 320° C

Start Temperature: 120° C for 4 min

End Temperature: 320° C for 3 min

Gradient: 15° C/min

Identity: IR, RT, MS

Comment Purity was determined by chromatographic assay corrected by water.

Water Content 0.1 % Determined by Karl-Fischer Titration

Det. Purity 91.7 % Tolerance/Uncertainty +/- 3.0 %

The uncertainty/tolerance of this standard is calculated in accordance with the EURACHEM/CITAC Guide - Quantifying Uncertainty in Analytical Measurement - Second Edition. The uncertainty given is the expanded combined uncertainty and represents an estimated standard deviation equal to the positive square root of the total variance of the uncertainty of components. The expanded uncertainty is U which is $Uc(y) \cdot K$, where K is the coverage factor at the 95% confidence level ($K=2$). The expanded uncertainty is based on the combination of uncertainties associated with each individual operation involved in the preparation of this product.

Certified on 17.12.2018

by D. Schmid

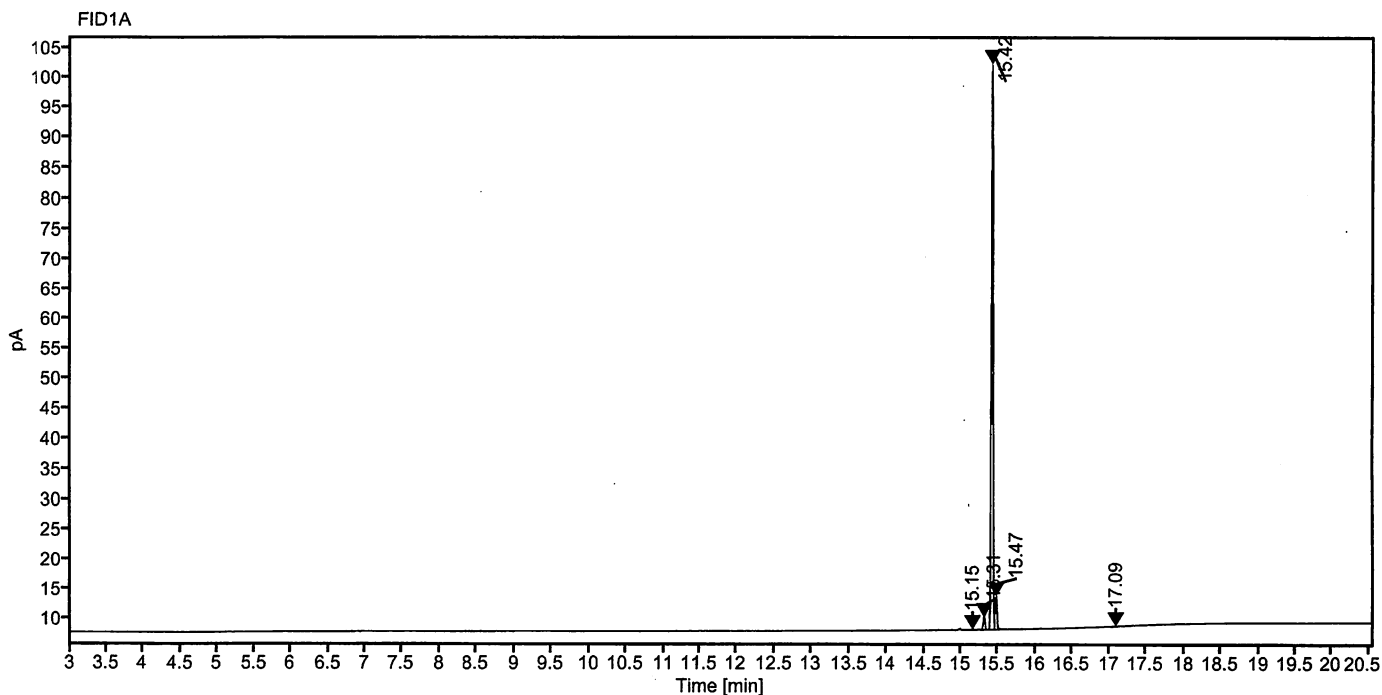
The Laboratory LGC Labor GmbH is accredited by DAkkS as indicated by the Accreditation Number D-RM-19883-01 & D-PL-19883-01 has shown competence based on ISO Guide 34:2009 with relevant parts of DIN EN ISO/IEC 17025:2005 for production of certified reference materials in form of organic pure substances and in form of single and multi-component solutions organic pure substances.

LGC Labor GmbH · Bgm.-Schlosser-Str. 6 A · 86199 Augsburg · Germany
Phone +49 821 906080 · Fax +49 821 9060888 · augsburg.inquiry@lgcgroup.com
The warranty for this product is limited to the purchasing price of this product.

17.12.2018, 4

Data file: 13342300-11-r002.dx Instrument: FID 2
Sample name: 81212AL 982098 Sequence Name: 2018KW50-1212a
Inj. volume [µl]: 1.0 Injection date: 12/13/2018 12:17:10 AM
Acq. method: pahk.amx Location: 54

Sample Description 2-Ethylhexyl diphenyl phosphate (technical)



Nr.	RT [min]	Area [pA*s]	Height [pA]	Area%	Width [min]
1	15.15	0.18147	0.11	0.12	0.025
2	15.31	3.12804	2.10	2.04	0.090
3	15.42	140.83166	93.94	91.86	0.085
4	15.47	9.00733	5.60	5.88	0.155
5	17.09	0.16334	0.08	0.11	0.027
	Sum	153.31			

Schmid D.